

**MATERIALS:**

0.4 metre / 16 ins Feature fabric (can be cut from two or more fat quarters  
OR Seven Layer Cake Squares)  
0.4 metre / 16 ins Background fabric

Part 2 / 52-inch frame - The Jagged Edge

**CUT:**

One square each background and feature fabrics  $5\frac{1}{4}$  ins sq.\*

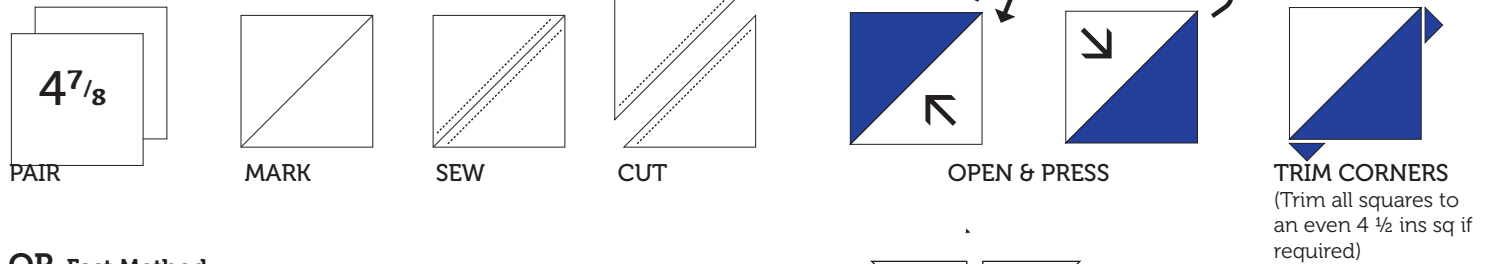
Twenty-two squares feature fabric PLUS twenty-four squares background all  $4\frac{7}{8}$  ins sq.

OR

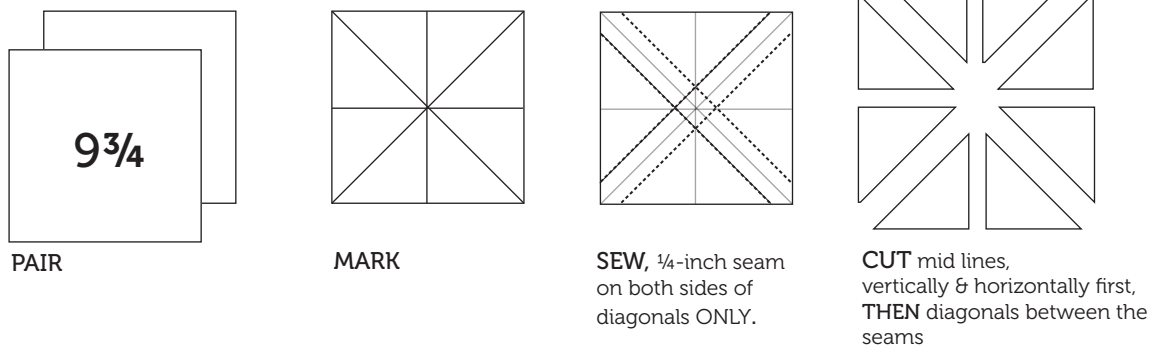
Six pairs rfeature + background all  $9\frac{3}{4}$  ins sq each for the fast method also shown below.

**\*TIP - When some of the required pieces are larger, always cut the largest ones first**

Make Fifty-two half square triangles.

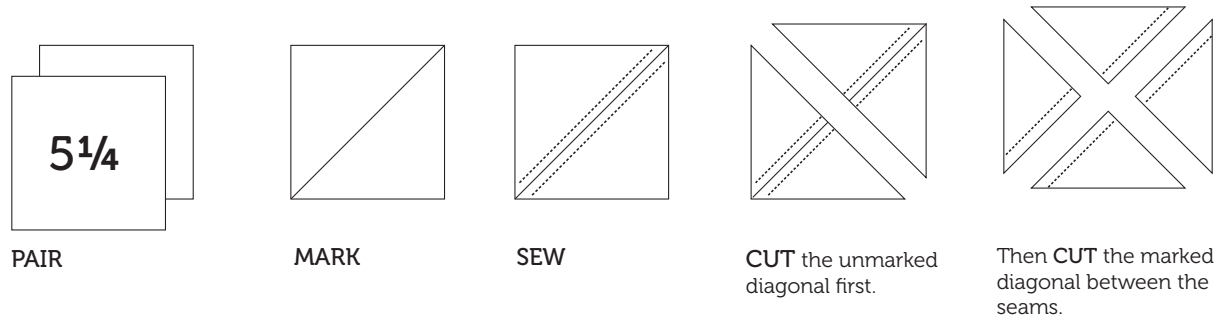


**OR Fast Method**

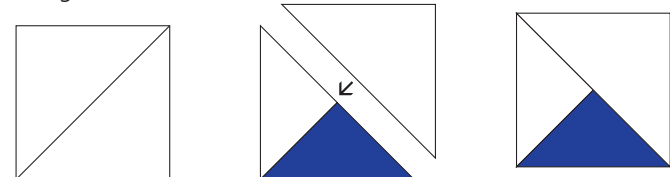


**OPEN** all pairs of triangles, **PRESS** light towards the dark and trim the corners. Check all measure  $4\frac{1}{2}$  ins squares, trim square if necessary.

Make **FOUR** quarter-square triangles:



**OPEN** flat and **PRESS**, light toward the dark. **TRIM** corners. You will have four pairs of quarter triangles.



**CUT** the last two background squares ( $4\frac{7}{8}$  ins sq.) in halves diagonally.

Sew one large background triangle onto each pair of quarter triangles.

**PRESS**, light toward dark and trim corners. **TRIM** all squares to an even  $4\frac{1}{2}$  inch square size if necessary.